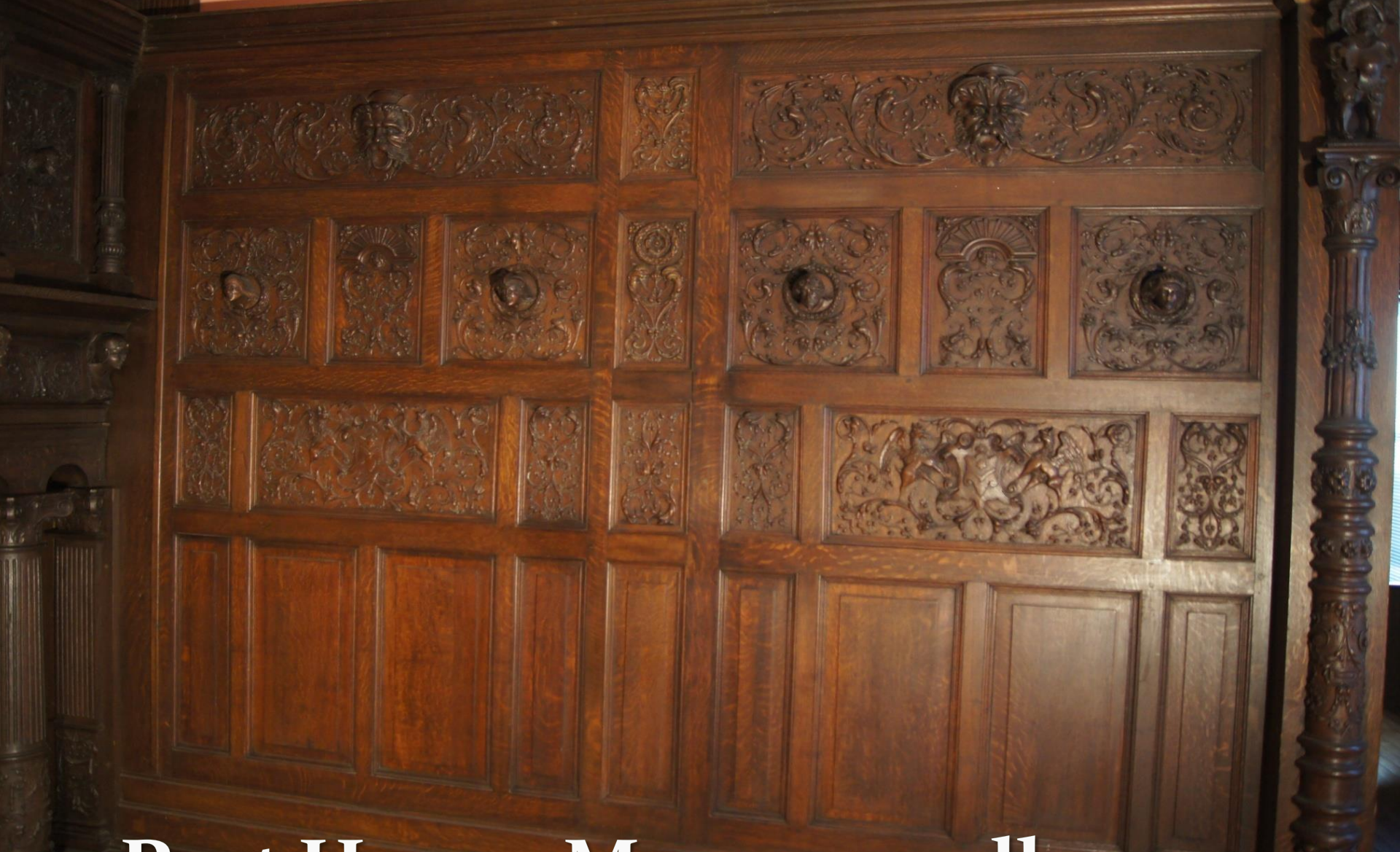


May
2016 --
It all
began
with
George

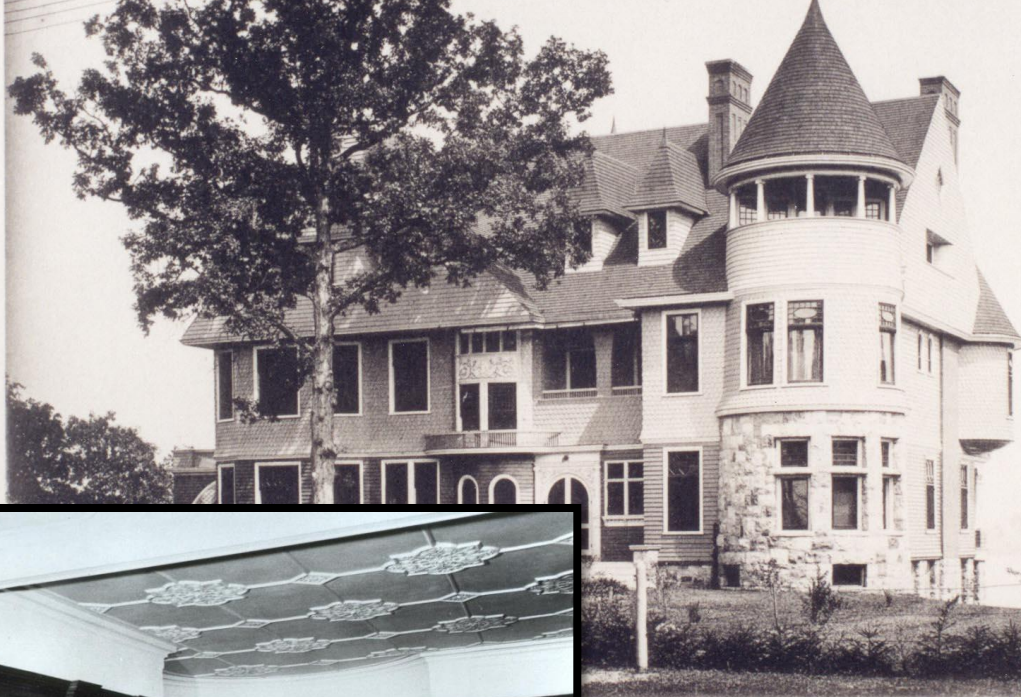




Oh, so peaceful



Port Huron Museum calls....
Would you like the paneling?



I R WHITING-ST CLAIR



Wood Paneling

This ornate paneling was removed from the Whiting & Moore house and installed in the Port Huron Museum.

Russell Sawyer, Photographer
Port Huron Museum Collection



Wood Paneling & Fireplace

This ornate paneling and fireplace was removed from the Whiting & Moore house and installed in the Port Huron Museum.

Russell Sawyer, Photographer
Port Huron Museum Collection

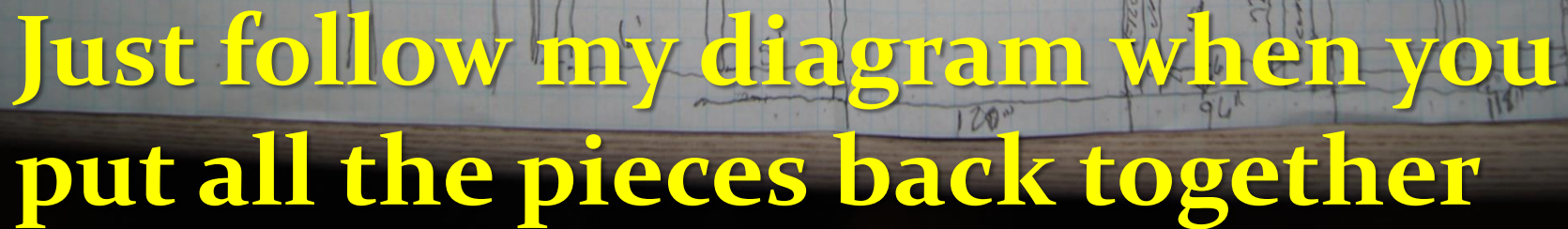
Saved from the wrecking ball of Belle Reve



First step – disassemble

Coming
down...
one
inch at
a time







Onto the
truck and
into
storage



Oh, by the way.....

What are we going
to do with it?

How are we going to
pay for it?

Contractor: \$40,000



Oh, darling, why not change everything...



How about we
have the
carpenters
build a false wall
11 feet high....
and cover it with
plywood....
and attach the
paneling to it



The money comes from sources big and small –

Grants: \$24,000 from anonymous donors
 \$10,000 from the Community Foundation
 of St. Clair County
 \$10,000 in other donations

**Community
Foundation**
of St. Clair County

First,
put
every-
thing
away

Dec. 2017





Let's store everything in the specialty rooms; just put the box we need first on top..... right

Then it's demolition time –
Take down the small walls,
Move the display cases
Get the stage ready for the
contractor





Don't forget to cover everything that's too big to move out of the main room

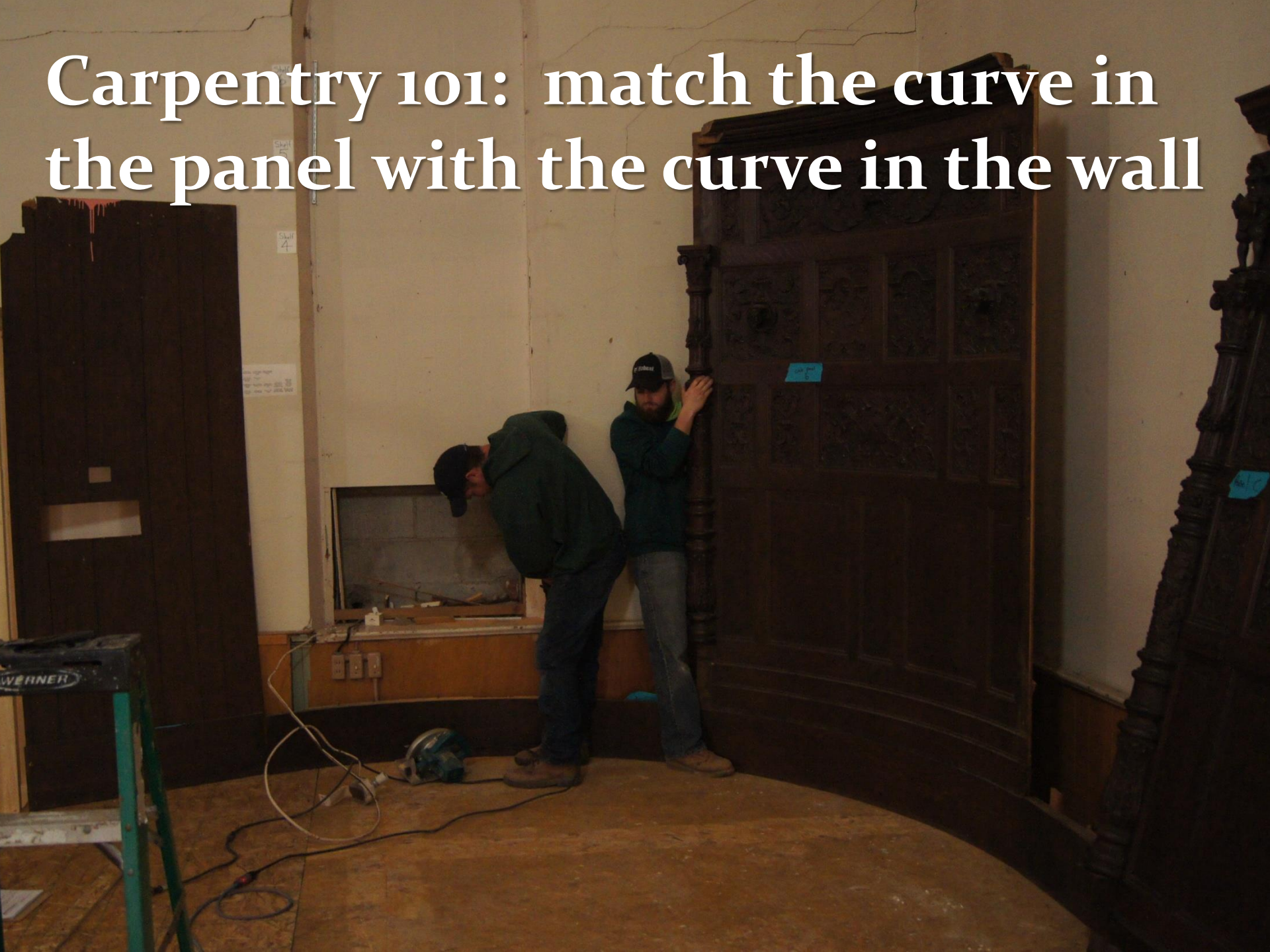


April 2018 --
up go the walls





Carpentry 101: match the curve in the panel with the curve in the wall






Bend the wallboard
just a little more



And build a false ceiling that will carry the weight of some of the big artifacts



What do we
do with the
old
galvanized
steel
baptismal
font?



It gets covered with a new oak floor



It's time to install the rest of the paneling



Then lift
the 400 lb.
mantel
into place
(which
actually
took 6
people)



Hallelujah



Don't forget the steps.....steps, plan 1, anyway



Any ideas for extra paneling pieces?



We're talented
enough to do
some of our own
construction





Who measured this board?



Painting
the new
walls is
part of the
job, too



**Creating new
ways to hang a
display case
can be a
challenge**



June 2018 – construction over and time to bring back the artifacts....

It's an easier job
when you ask for
extra volunteers





**Has anybody
seen where we
stored that box
of artifacts?**





It's a lot
easier if we
roll the
wooden
church
clock up
the steps
and out of
storage



I know I can design a totally new display



Do I really have to clean every cubby?



The new schoolroom
and captain's bedroom
displays start coming
together



Fire Department display waits for a story plaque, new signs and labels

Steps,
plan 2,
a grand
staircase
befitting a
grand room





We'll finish putting the pieces together for a May 2019 completion and Grand Open House

George says
Thank
You
to
everyone
who
helped

